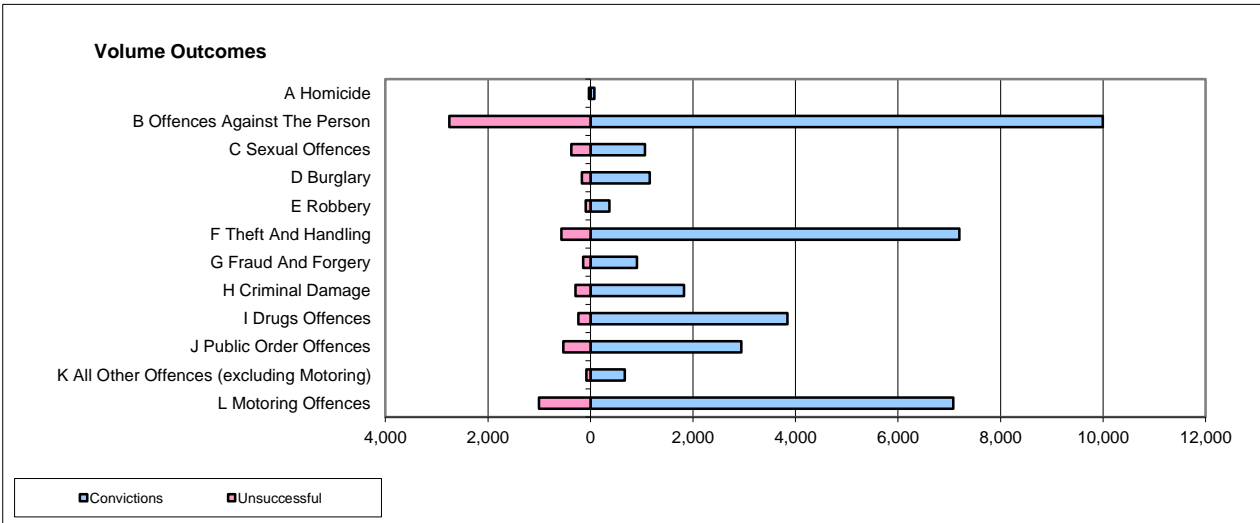
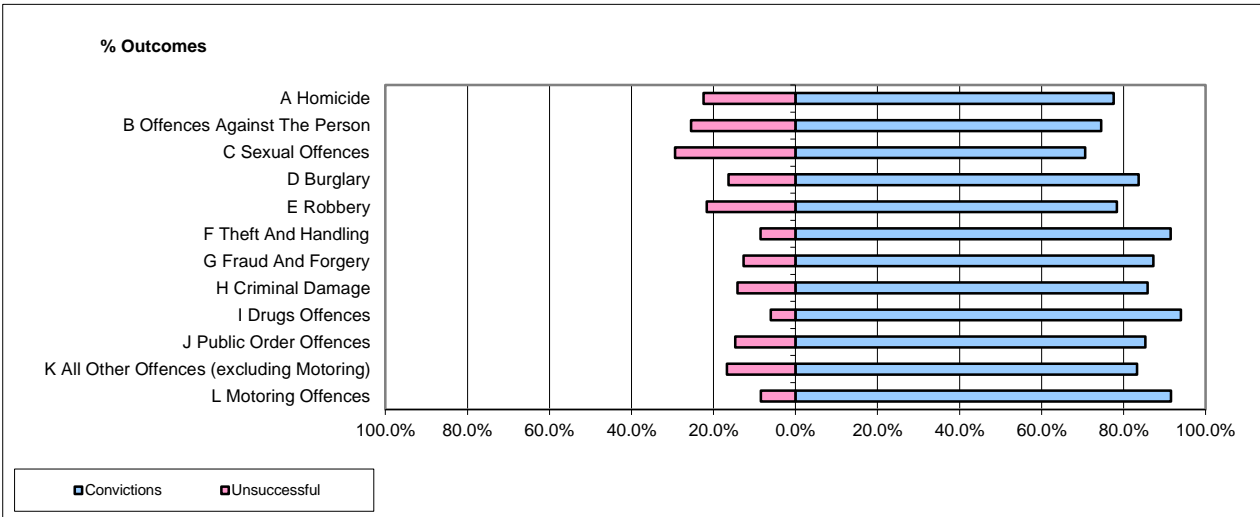


CPS OUTCOMES BY PRINCIPAL OFFENCE CATEGORY

Feb-17

National



	Convictions		Unsuccessful	
	Number of Defendants	%	Number of Defendants	%
A Homicide	75	71.4%	30	28.6%
B Offences Against The Person	9,993	78.4%	2,753	21.6%
C Sexual Offences	1,062	74.1%	372	25.9%
D Burglary	1,158	87.3%	168	12.7%
E Robbery	372	80.2%	92	19.8%
F Theft And Handling	7,195	92.7%	570	7.3%
G Fraud And Forgery	904	86.2%	145	13.8%
H Criminal Damage	1,827	86.2%	292	13.8%
I Drugs Offences	3,843	94.2%	236	5.8%
J Public Order Offences	2,942	84.8%	528	15.2%
K All Other Offences (excluding Motoring)	667	88.9%	83	11.1%
L Motoring Offences	7,078	87.6%	1,002	12.4%
Admin Finalisations	0	0.0%	756	100.0%
TOTAL	37,116	84.1%	7,027	15.9%

Please note that these data do not include Casework Divisions.