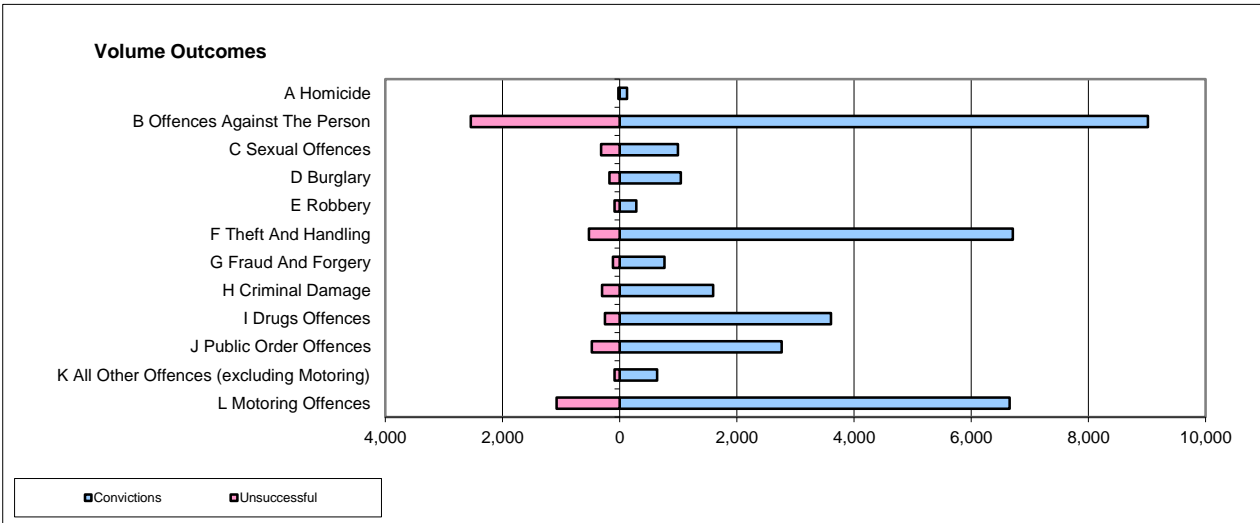
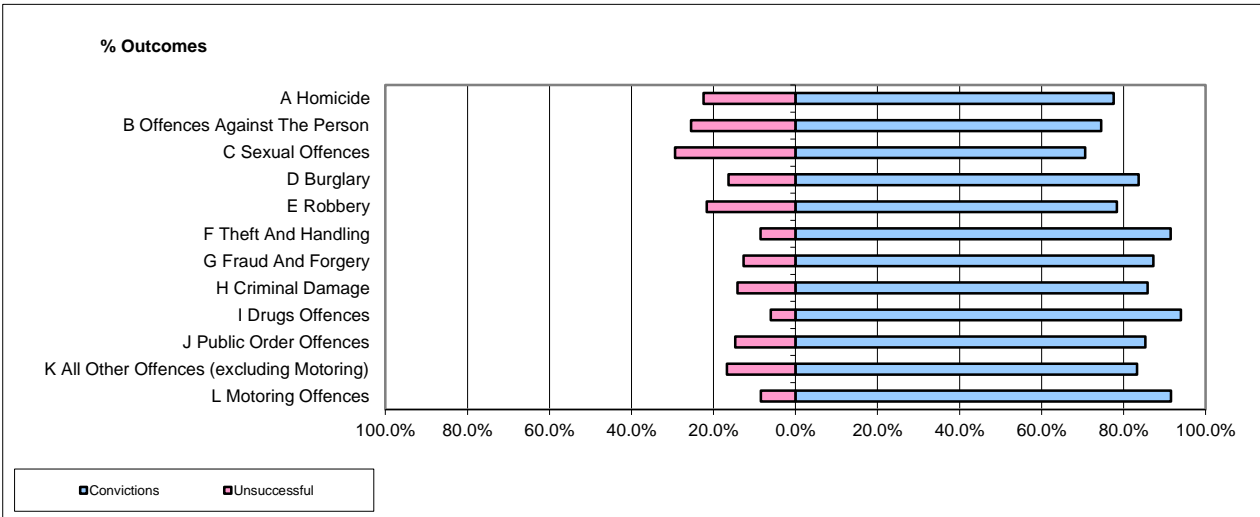


CPS OUTCOMES BY PRINCIPAL OFFENCE CATEGORY

Dec-16

National



	Convictions		Unsuccessful	
	Number of Defendants	%	Number of Defendants	%
A Homicide	125	83.3%	25	16.7%
B Offences Against The Person	9,015	78.0%	2,543	22.0%
C Sexual Offences	992	75.8%	317	24.2%
D Burglary	1,040	85.3%	179	14.7%
E Robbery	284	75.7%	91	24.3%
F Theft And Handling	6,707	92.7%	526	7.3%
G Fraud And Forgery	762	86.9%	115	13.1%
H Criminal Damage	1,596	84.0%	303	16.0%
I Drugs Offences	3,608	93.4%	254	6.6%
J Public Order Offences	2,766	85.3%	478	14.7%
K All Other Offences (excluding Motoring)	635	87.6%	90	12.4%
L Motoring Offences	6,656	86.1%	1,077	13.9%
Admin Finalisations	0	0.0%	937	100.0%
TOTAL	34,186	83.1%	6,935	16.9%

Please note that these data do not include Casework Divisions.