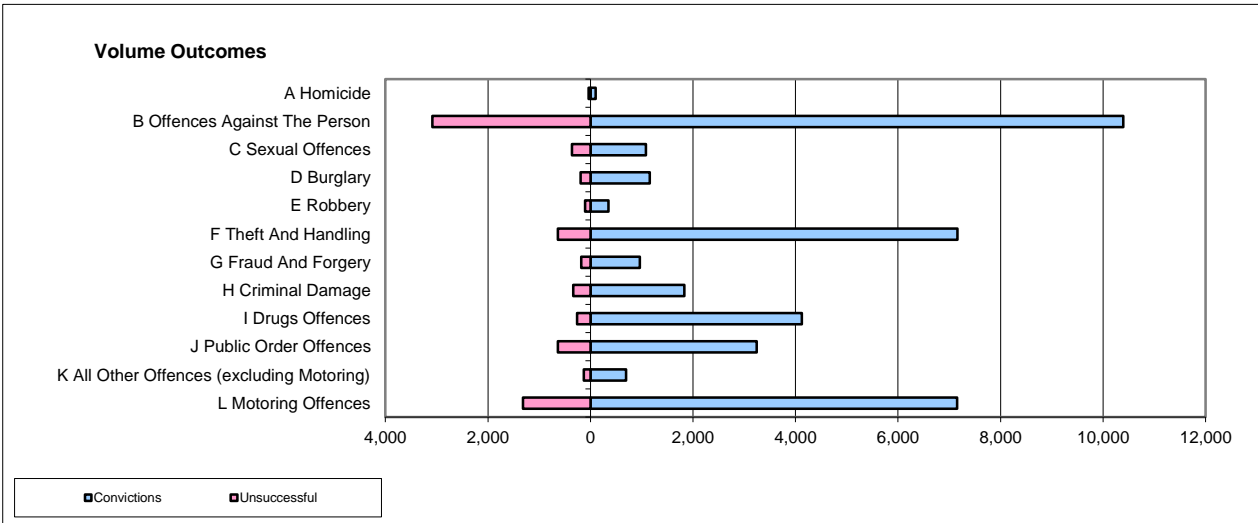
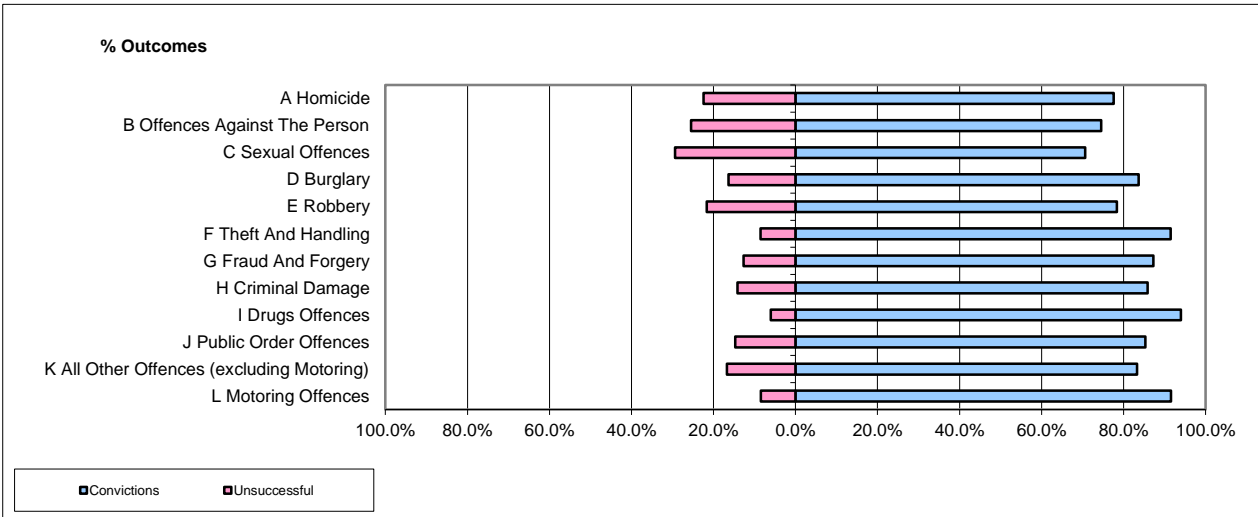


CPS OUTCOMES BY PRINCIPAL OFFENCE CATEGORY

Jul-15

National



	Convictions		Unsuccessful	
	Number of Defendants	%	Number of Defendants	%
A Homicide	101	74.3%	35	25.7%
B Offences Against The Person	10,394	77.1%	3,087	22.9%
C Sexual Offences	1,084	74.9%	363	25.1%
D Burglary	1,159	85.9%	191	14.1%
E Robbery	348	77.2%	103	22.8%
F Theft And Handling	7,156	91.8%	637	8.2%
G Fraud And Forgery	961	84.3%	179	15.7%
H Criminal Damage	1,831	84.5%	337	15.5%
I Drugs Offences	4,123	94.1%	260	5.9%
J Public Order Offences	3,245	83.7%	634	16.3%
K All Other Offences (excluding Motoring)	697	84.5%	128	15.5%
L Motoring Offences	7,150	84.4%	1,317	15.6%
Admin Finalisations	0	0.0%	803	100.0%
TOTAL	38,249	82.6%	8,074	17.4%

Please note that these data do not include Casework Divisions.