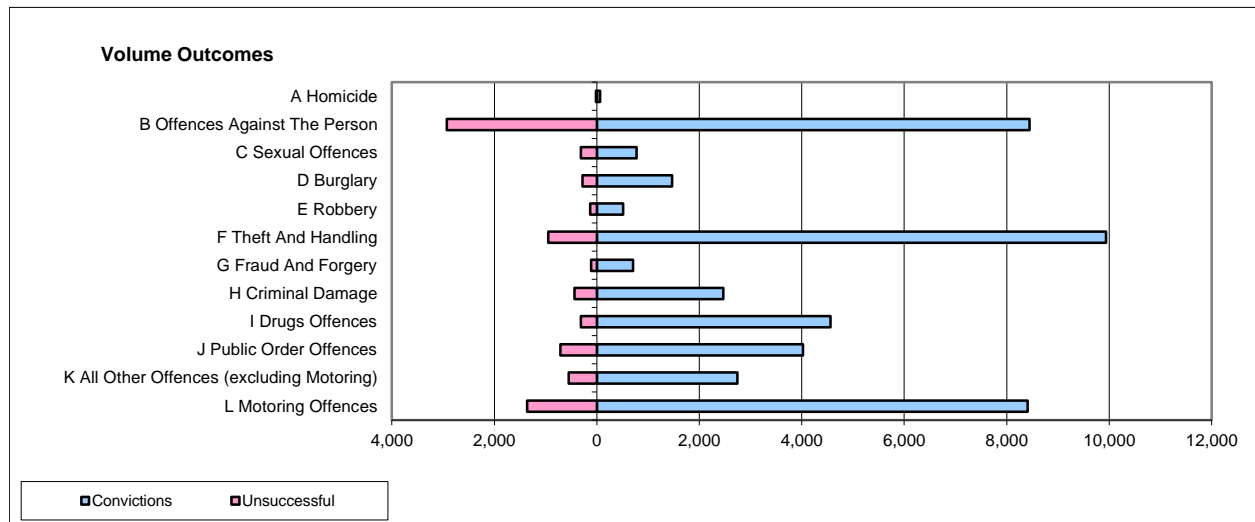
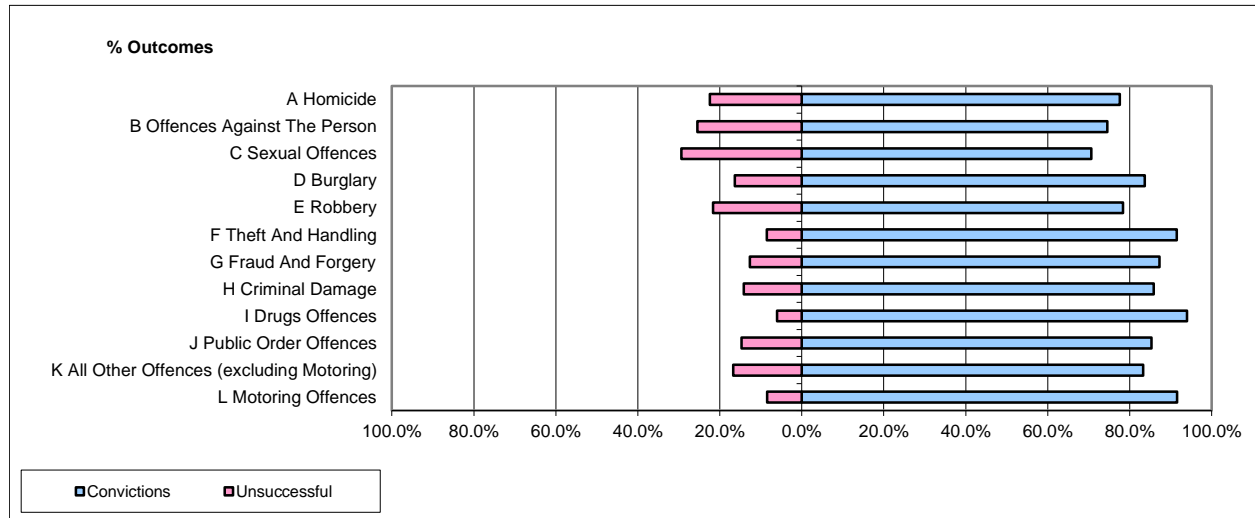


CPS OUTCOMES BY PRINCIPAL OFFENCE CATEGORY

Jun-14

National



	Convictions		Unsuccessful	
	Number of Defendants	%	Number of Defendants	%
A Homicide	61	77.2%	18	22.8%
B Offences Against The Person	8,444	74.3%	2,927	25.7%
C Sexual Offences	778	71.4%	311	28.6%
D Burglary	1,467	84.1%	277	15.9%
E Robbery	512	79.5%	132	20.5%
F Theft And Handling	9,938	91.3%	947	8.7%
G Fraud And Forgery	708	86.6%	110	13.4%
H Criminal Damage	2,466	85.0%	436	15.0%
I Drugs Offences	4,563	93.6%	311	6.4%
J Public Order Offences	4,023	85.0%	712	15.0%
K All Other Offences (excluding Motoring)	2,743	83.4%	547	16.6%
L Motoring Offences	8,407	86.1%	1,361	13.9%
Admin Finalisations	0	0.0%	664	100.0%
TOTAL	44,110	83.4%	8,753	16.6%

Please note that these data do not include Casework Divisions.