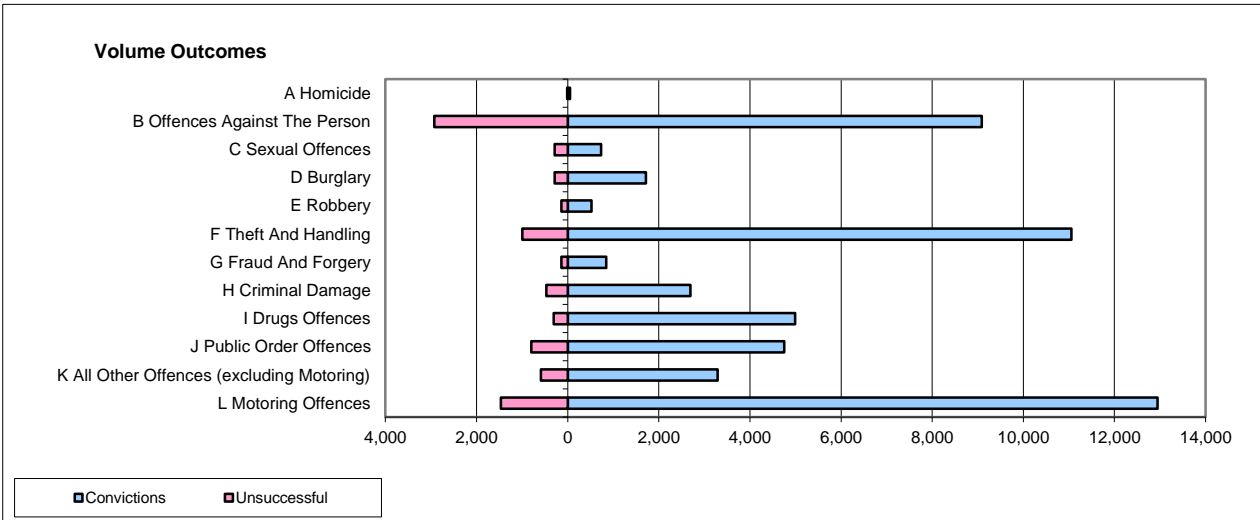
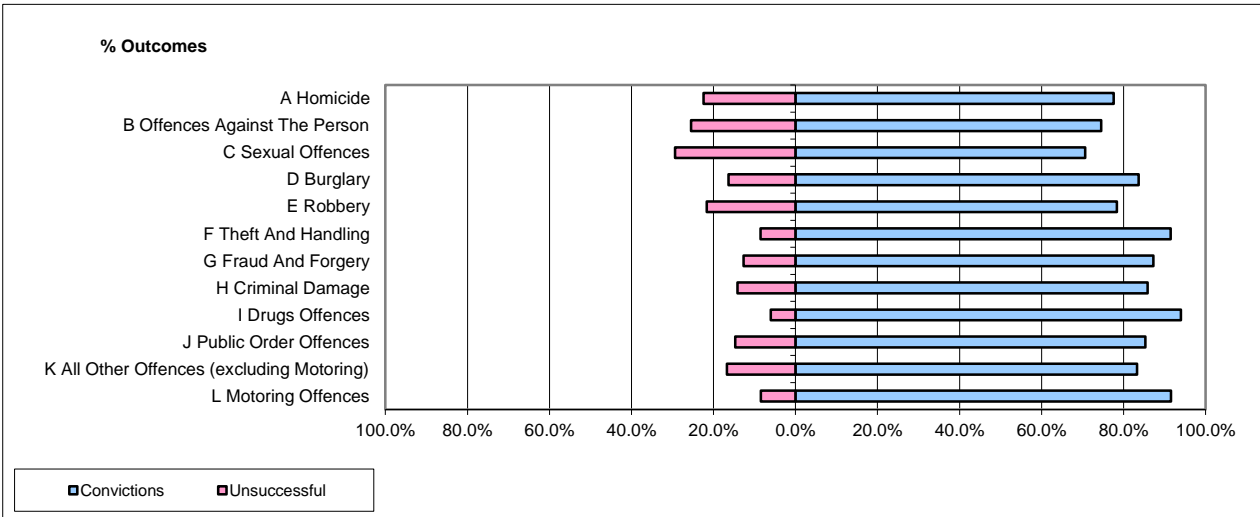


**CPS OUTCOMES BY PRINCIPAL OFFENCE CATEGORY**

Jan-14

**National**



	Convictions		Unsuccessful	
	Number of Defendants	%	Number of Defendants	%
<b>A Homicide</b>	51	82.3%	11	17.7%
<b>B Offences Against The Person</b>	9,087	75.6%	2,930	24.4%
<b>C Sexual Offences</b>	736	72.0%	286	28.0%
<b>D Burglary</b>	1,715	85.8%	284	14.2%
<b>E Robbery</b>	522	79.0%	139	21.0%
<b>F Theft And Handling</b>	11,057	91.7%	998	8.3%
<b>G Fraud And Forgery</b>	846	86.1%	137	13.9%
<b>H Criminal Damage</b>	2,693	85.1%	472	14.9%
<b>I Drugs Offences</b>	4,988	94.2%	305	5.8%
<b>J Public Order Offences</b>	4,752	85.6%	797	14.4%
<b>K All Other Offences (excluding Motoring)</b>	3,291	84.9%	586	15.1%
<b>L Motoring Offences</b>	12,945	89.8%	1,466	10.2%
<b>Admin Finalisations</b>	0	0.0%	890	100.0%
<b>TOTAL</b>	<b>52,683</b>	<b>85.0%</b>	<b>9,301</b>	<b>15.0%</b>

Please note that these data do not include Casework Divisions.