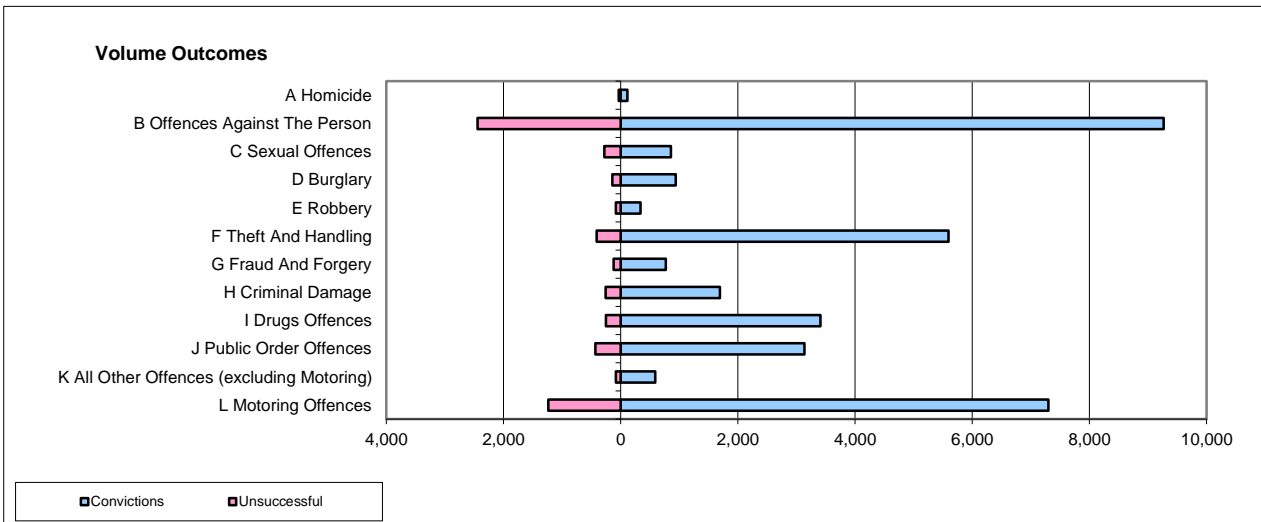
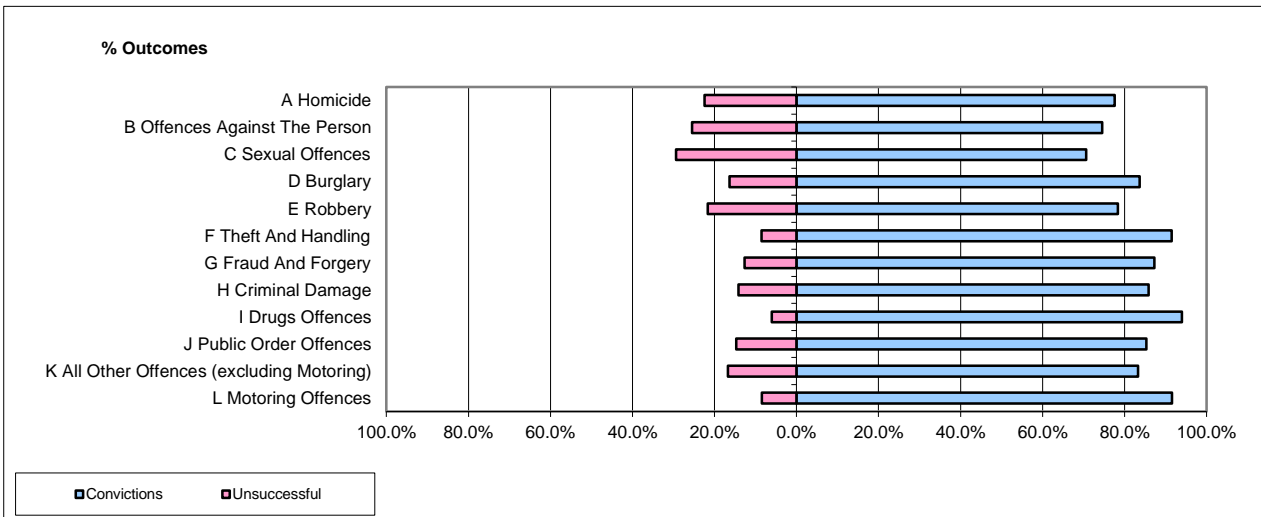


CPS OUTCOMES BY PRINCIPAL OFFENCE CATEGORY

May-18

National



	Convictions		Unsuccessful	
	Number of Defendants	%	Number of Defendants	%
A Homicide	111	76.0%	35	24.0%
B Offences Against The Person	9,270	79.1%	2,442	20.9%
C Sexual Offences	859	75.5%	278	24.5%
D Burglary	941	86.8%	143	13.2%
E Robbery	336	80.2%	83	19.8%
F Theft And Handling	5,593	93.1%	412	6.9%
G Fraud And Forgery	769	86.3%	122	13.7%
H Criminal Damage	1,691	86.9%	256	13.1%
I Drugs Offences	3,407	87.9%	254	6.9%
J Public Order Offences	3,136	87.3%	432	12.1%
K All Other Offences (excluding Motoring)	589	85.5%	86	12.7%
L Motoring Offences	7,302	83.5%	1,237	16.5%
Admin Finalisations	0	0.0%	931	100.0%
TOTAL	34,004	83.5%	6,711	16.5%

Please note that these data do not include Casework Divisions.