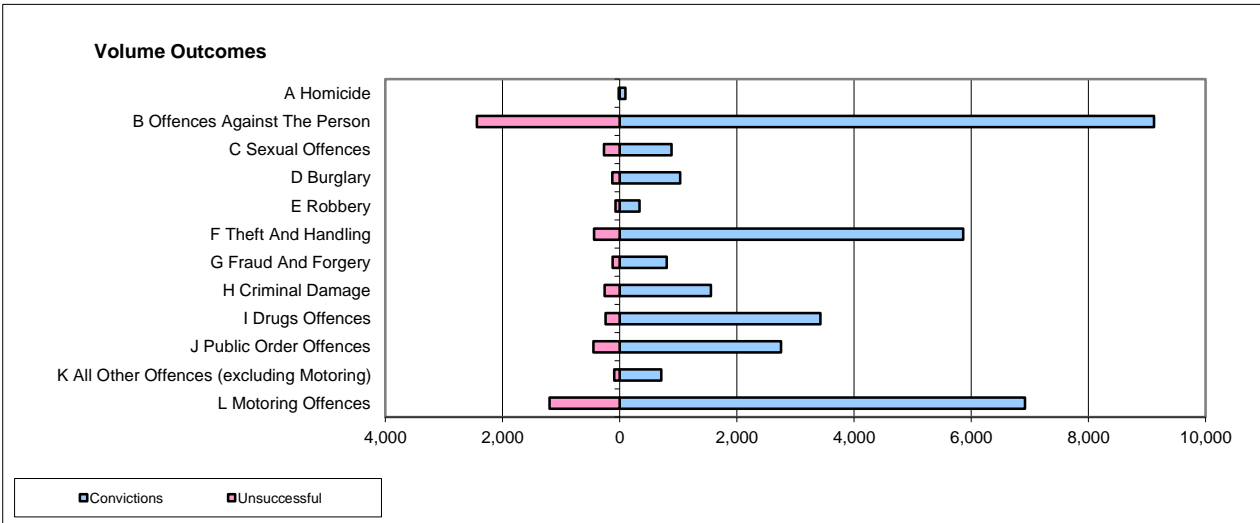
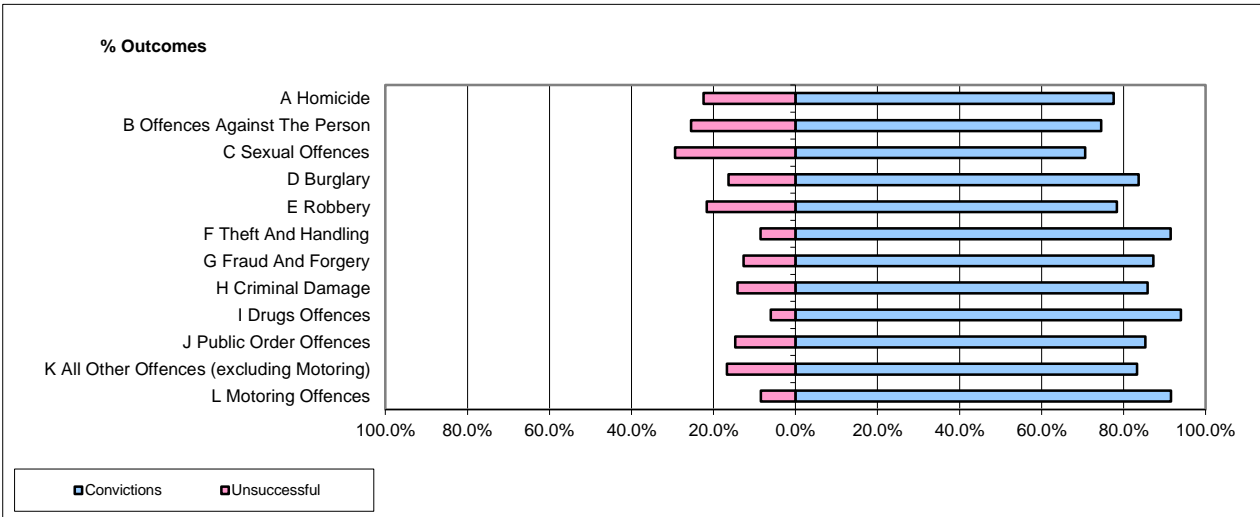


CPS OUTCOMES BY PRINCIPAL OFFENCE CATEGORY

Feb-18

National



	Convictions		Unsuccessful	
	Number of Defendants	%	Number of Defendants	%
A Homicide	94	84.7%	17	15.3%
B Offences Against The Person	9,119	78.9%	2,437	21.1%
C Sexual Offences	883	76.6%	269	23.4%
D Burglary	1,030	88.9%	129	11.1%
E Robbery	338	82.6%	71	17.4%
F Theft And Handling	5,865	93.0%	439	7.0%
G Fraud And Forgery	801	87.0%	120	13.0%
H Criminal Damage	1,556	85.6%	261	14.4%
I Drugs Offences	3,423	93.4%	243	6.6%
J Public Order Offences	2,752	86.0%	448	14.0%
K All Other Offences (excluding Motoring)	710	88.3%	94	11.7%
L Motoring Offences	6,917	85.3%	1,196	14.7%
Admin Finalisations	0	0.0%	869	100.0%
TOTAL	33,488	83.6%	6,593	16.4%

Please note that these data do not include Casework Divisions.